

## > OUR RTG BATH CARE SYSTEM

> As add-on module incl. PLC or individual components for integration

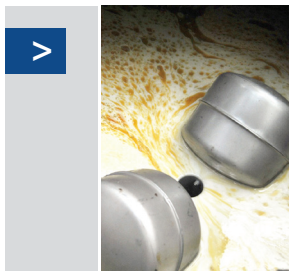
### THE COMPONENTS:

- RTG DPS including coalescence oil separator
- Full flow neodymium magnetic bars
- RTG stainless steel telescope skimmer
- RTG stainless steel displacement pump
- RTG hydraulic unit
- RTG oil sensor
- Fully automatic dosing unit
- Optional online builder and surfactant sensors



> The functionality of RTG bath care systems

### SURFACE SKIMMING / OIL AND PARTICLE DISCHARGE IN CLEANING BATH



- Extracting of oils/particles from the bath surface using the RTG skimmer
- Controlled displacement pump feeds the medium into the RTG DPS 120
- Magnetic filtering in the inlet of the RTG DPS 120 oil separator
- Controlled discharge of the oils/particles in DPS 120 using the RTG hydraulic unit
- Additional dosage of the lacking surfactant and builder in the clean section of DPS 120
- Return flow of the treated medium into the cleaning system

### MAGNETIC SEPARATION/ OIL AND PARTICLE SEPARATION / DOSAGE IN DPS 120



The RTG hydraulic unit extracts the floating oils and particles in the DPS 120 coalescence oil separator.

The treated medium flows back from the left to the cleaning system.

## Your benefits

- > Oils, pollutants and particles are removed from the unit fast and efficiently
- > Considerably longer bath service life (6-12 months)
- > Significantly increasing technical components cleanliness
- > Invariable quality of the cleaning agent
- > Consistently high quality of the cleaned components
- > Consistently optimum anticorrosive coating of components
- > Saving on operating expenses and a very high degree of customer satisfaction